

Gioco di memoria

Le matite sono temperate?



STAMPARE



COLORARE



RITAGLIARE

Ora si può iniziare:

Distribuire le schedine sul tavolo con l'immagine all'ingiù, voltarle una per una e trovare così con un po' di fortuna il motivo doppio. Chi ha trovato una coppia può fare un altro tentativo. Le coppie scoperte possono essere raccolte da chi le ha trovate in un mazzo proprio; quindi vince il giocatore con più carte raccolte.

Consiglio:

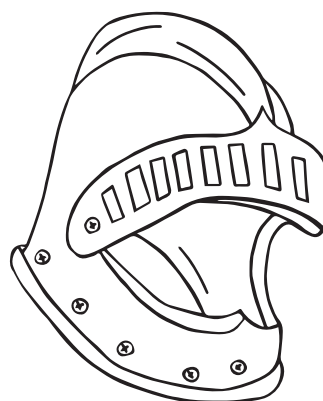
Se incollate sul retro della carta colorata, le schedine da gioco non solo diventano carte dai colori vivaci, ma anche più robuste. Ovviamente, però, solo di un colore- altrimenti diventa troppo facile.

E adesso: Buon divertimento!

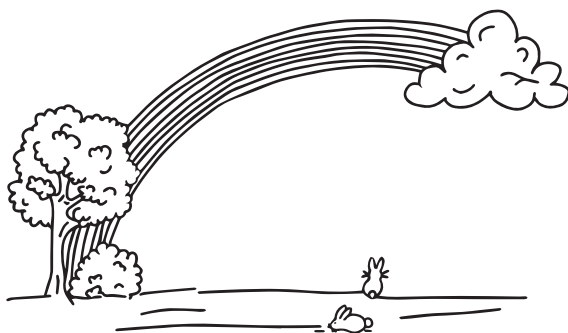
ARMATURA



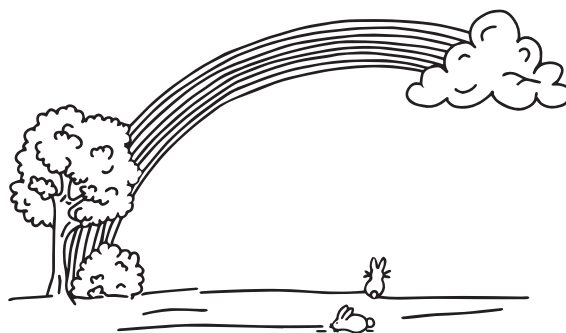
ARMATURA



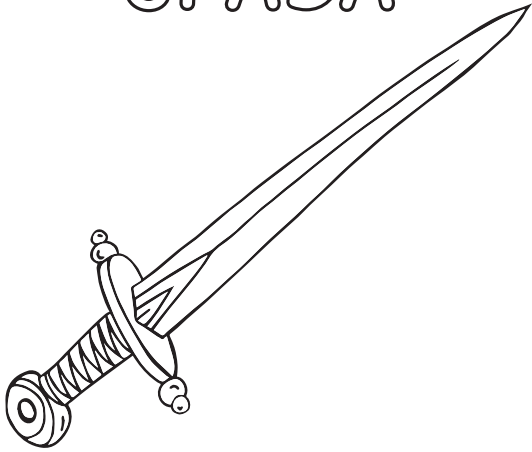
ARCOBALENO



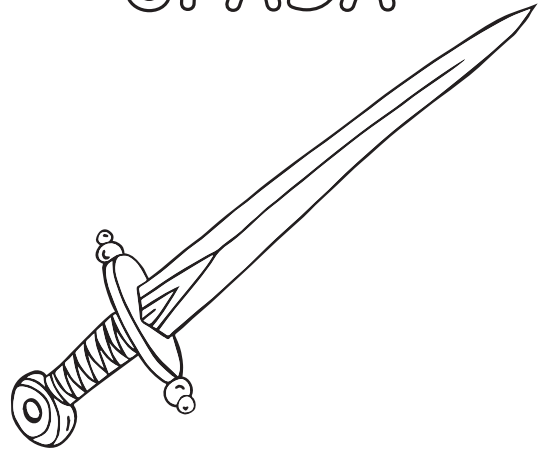
ARCOBALENO



SPADA



SPADA



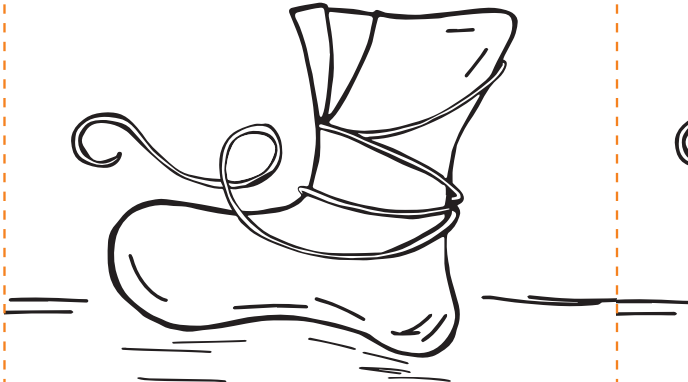
CASTELLO



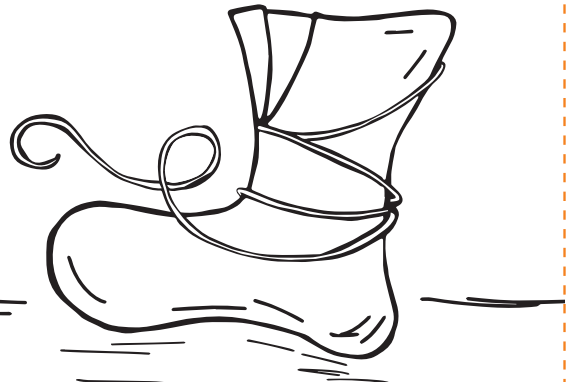
CASTELLO



BUNDSCHUH
(LEGA DELLA SCARPA)



BUNDSCHUH
(LEGA DELLA SCARPA)



I 12 ARTICOLI



I 12 ARTICOLI



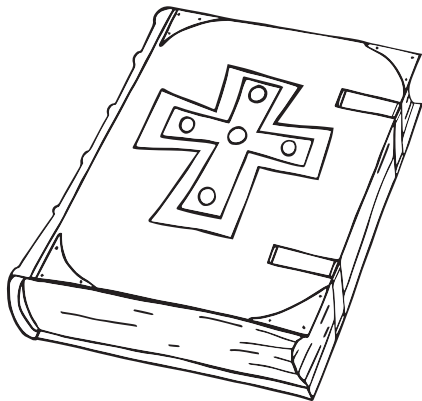
CHIESA



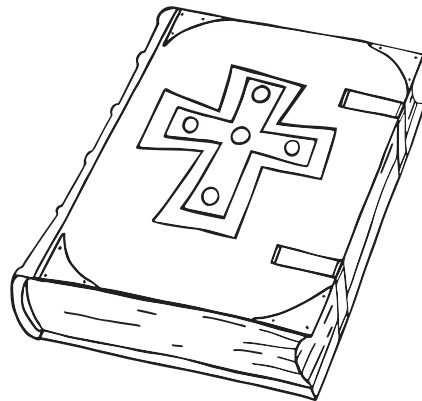
CHIESA



BIBBIA



BIBBIA



THOMAS MÜNTZER



THOMAS MÜNTZER



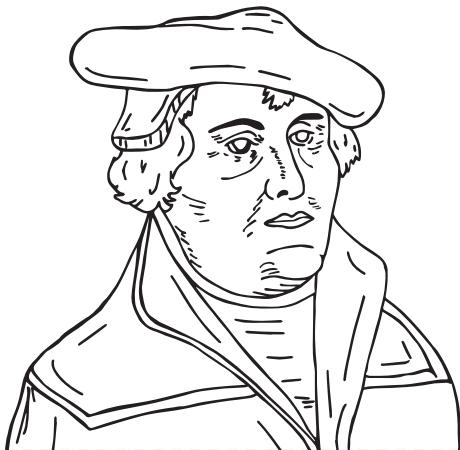
MONACO



MONACO



MARTIN LUTHER



MARTIN LUTHER



CONTADINI



CONTADINI



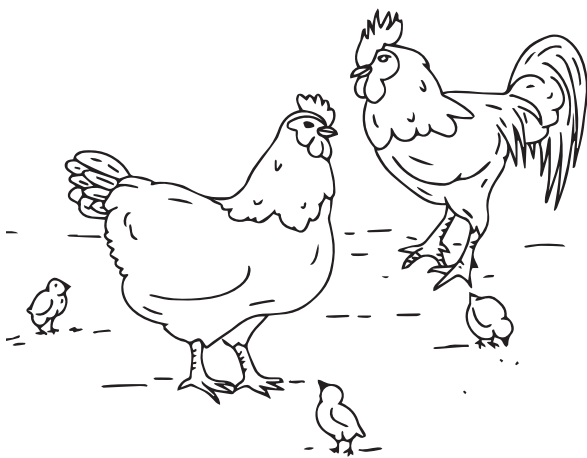
GRANO



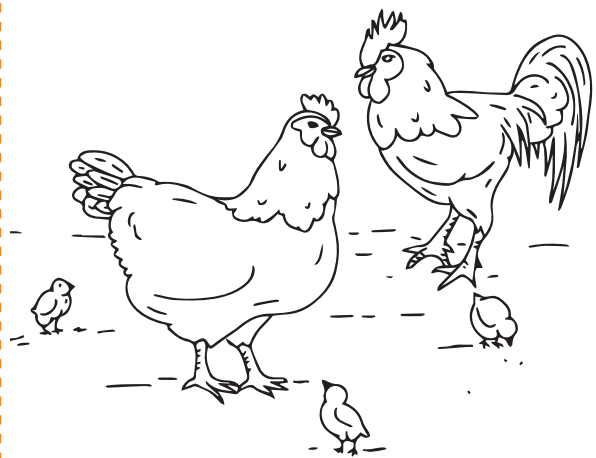
GRANO



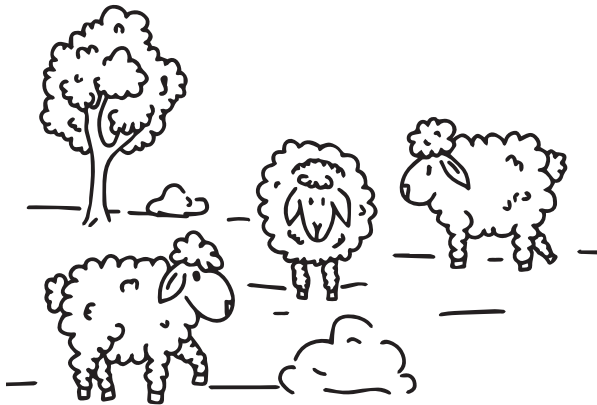
GALLINE



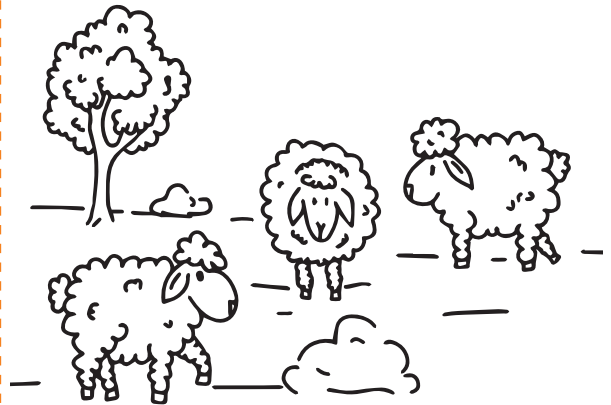
GALLINE



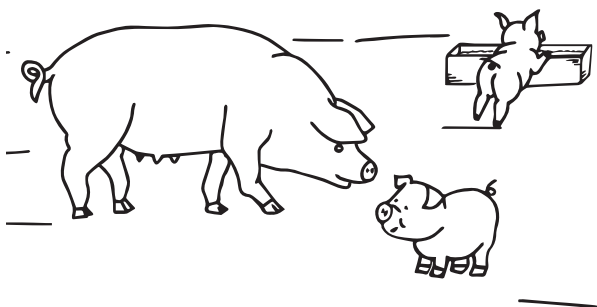
PECORE



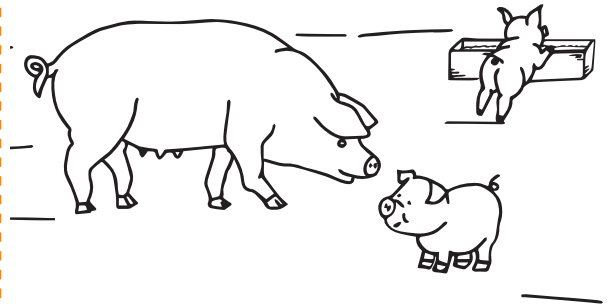
PECORE



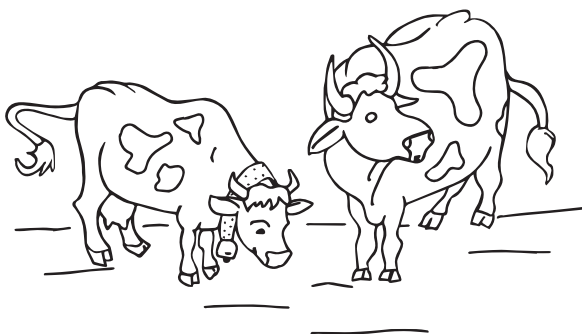
PORCI



PORCI



MUCCHE



MUCCHE

